

# PW MILLAR LTD

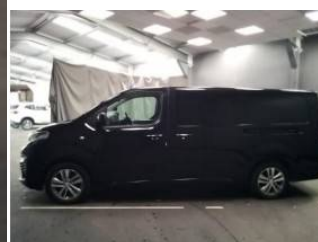
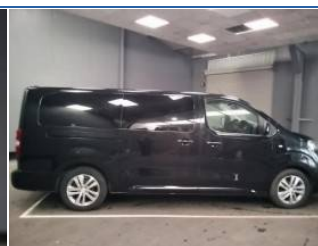
ESTABLISHED 1970

## 2020-70 | PEUGEOT TRAVELLER

2.0 BlueHDi Allure Long MPV LWB Euro 6 (s/s) 5dr |  
Diesel | Manual | Nera Black



<https://www.pwmillar.co.uk>  
**01446 733248**



## £19,990

From **£511** per month HP

Mileage **79,671 miles**

Fuel **Diesel**

Engine **2 litre**

Transmission **Manual**

Gears **6**

Insurance group **23E**

### SPECIFICATIONS

Door open warning	Audible lights on warning	One touch electric front windows
Aviation style rear seat air conditioning panel floor mounted air vents	Hi-Fi Pack - Traveller	Brushed aluminium inlay
Volumetric anti theft alarm	USB socket	Tyre puncture repair kit
ABS/EBD	Multi function trip computer	Body colour door mirrors
Multifunction steering wheel	Easy entry pack - Traveller	Decorative inlays to dashboard, door and side panels
Remote central locking + deadlocks	7" touch screen with DAB radio	17" Phoenix alloy wheels
Driver and front passenger side airbags	Exterior temperature indicator with ice warning	Body colour door handles with chrome trim
Boot load restraint net	Chrome air vent surrounds	Automatic door locking when moving off
Front ventilated disc brakes and rear disc brakes	3.5" colour display instrument panel, 4 dials: rev counter, speedo with illuminated chrome plate surround, fuel gauge and water temperature	Body colour bumpers/side rubbing strips
Lower glovebox - no lid	Immobiliser	3 point seatbelts on all seats
Programmable cruise control and speed limiter	LED daytime running lights	Fixing rings x 6 in load area
Emergency fuel cut off	Head up Display	Heated rear windows with wash wipe
Aviation style rear seat air conditioning panel temperature and fan speed adjustment	Front optimised safety headrests and rear retractable headrests (x3), height adjustable	Visio park assist 180 with front and rear sensors, blind spot monitor and reversing camera

### TECHNICAL

#### Performance

0-100 kmh **10.3 s**  
(62 mph)  
Top speed **115 mph**

#### Emissions Ice

CO<sub>2</sub> **145 (g/km)**  
(g/km)

#### Fuel Consumption Ice

MPG (combined) **41.9 mpg**  
L/100km (combined) **6.7 l/100km**  
MPG (combined) **50.4 mpg**  
MPG (extra urban) **54.3 mpg**  
MPG (urban) **44.8 mpg**

#### Capacities

Fuel tank **69 litres**

....MORE.... For the full details please call us or scan the QR code above

01446 733248

[sales@pwmillar.co.uk](mailto:sales@pwmillar.co.uk)

**P W Millar** 148 Port Road East Barry South Glamorgan CF62 9PZ

Whilst every effort has been made to ensure the accuracy of the vehicle specification, some inaccuracies may occasionally occur. It is important that you do not rely solely on this information, but check with a member of the sales staff about any features which may affect your decision to buy the car.