

PW MILLAR LTD

ESTABLISHED 1970

2020-70 | **BMW X1**

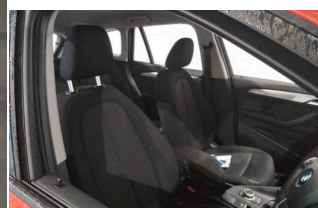
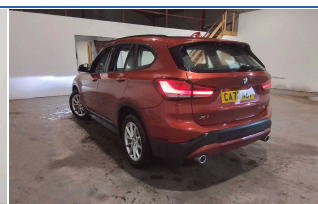
2.0 20i SE DCT sDrive Euro 6 (s/s) 5dr, Only 1886

Miles | Petrol | Automatic | Sunset Orange



<https://www.pwmillar.co.uk>

01446 733248



£19,399

From **£496** per month HP

Mileage **1,886 miles**

Fuel **Petrol**

Engine **2 litre**

Transmission **Automatic**

Gears **7**

Insurance group **28E**

SPECIFICATIONS

Warning triangle and first aid kit	Service interval indicator	Roof mouldings in matt black
2 cup holders in front	Extended storage package - X1	Anti-roll bars
Contrast stitching on instrument panel	Central locking switch for all doors, fuel filler cap and luggage compartment	BMW professional radio includes amplifier power 100w, Two mid range speakers in door trims and two woofers as central bass speaker under front seats
Low rolling resistance tyres	Collision mitigation braking system	Cruise control with brake assist
BMW Icon design LED daytime driving lights	Luggage area underfloor compartment	Twin tube gas filled shock absorbers with degressive characteristic curve
Oxide Silver interior trim with high gloss black finisher	Start/stop button with comfort go keyless engine start and auto start stop deactivation button	DAB Digital radio
17" V spoke light alloy wheels finished in reflex silver- Style 560	Brake energy regeneration	Front/rear park distance control (PDC)
Kidney grille with 14 chrome black vertical bars	Standing free front adjustable armrest and fixed in different positions	Seven speed sport dual clutch automatic transmission (DCT)
Locking wheel bolts	Tyre mobility system	Audio/visual collision warning system
On board computer	Solid paint	3 spoke sport leather steering wheel
Standard suspension	Engine immobiliser	Three point seat belts in all seats

TECHNICAL

Performance	
0-100 kmh (62 mph)	7.7 s
Top speed	140 mph
Emissions Ice	
CO ₂ (g/km)	129 (g/km)
Fuel Consumption Ice	
MPG (combined)	40.9 mpg
L/100km (combined)	6.9 l/100km
MPG (combined)	49.6 mpg
MPG (extra urban)	56.5 mpg
MPG (urban)	41.5 mpg
Capacities	
Boot (seats up)	505 litres
Boot (seats down)	1550 litres
Fuel tank	51 litres
General	
NCAP Overall	5

....MORE.... For the full details please call us or scan the QR code above

01446 733248

sales@pwmillar.co.uk

P W Millar 148 Port Road East Barry South Glamorgan CF62 9PZ

Whilst every effort has been made to ensure the accuracy of the vehicle specification, some inaccuracies may occasionally occur. It is important that you do not rely solely on this information, but check with a member of the sales staff about any features which may affect your decision to buy the car.