

PW MILLAR LTD

ESTABLISHED 1970

2025-25 | CITROEN C5 AIRCROSS

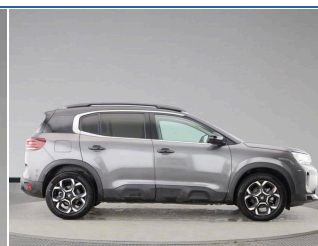
1.5 BlueHDi MAX Edition EAT8 Euro 6 (s/s) 5dr |

Diesel | Automatic | Platinum Grey



<https://www.pwmillar.co.uk>

01446 733248



£21,999

From **£404** per month PCP

Mileage **1,815 miles**

Fuel **Diesel**

Engine **1.5 litre**

Transmission **Automatic**

Gears **8**

Insurance group **19E**

SPECIFICATIONS

ABS/EBD	Multi function trip computer	Sequential electric front and rear side windows with anti pinch function
3 point ISOFIX mountings on front passenger and rear outer seats	Interior lighting package - C5 Aircross	Advanced comfort suspension
Remote central locking + deadlocks	Auxiliary input socket	18" Pulsar diamond cut bi tone alloy wheels with Class A+ tyres
Tyre under inflation indicator	Citroen connect box emergency assist system	Rear bumper upper body colour and lower matt black
Map pockets in rear of front seats	Drive assist pack - C5 Aircross/Highway driver assist	Electronic code immobiliser
FM and DAB digital radio, 6 speakers	Wheel chock and towing tool	Hill start assist
Tailgate	Perla nera black bi-tone roof	2 Position boot floor
Gloss black colour pack - C5 Aircross	Anti theft alarm with perimeter and volumetric protection, plus tilt sensor	Polyphonic sounds
Driver and front passenger side airbags	12.3" digital instrument cluster with customisable zones and colour schemes	Front fog lights with static cornering function
Dashboard storage area to right of driver, open storage at front of central console, glovebox with smooth opening and lighting	City camera pack with front and rear parking sensors - C5 Aircross	Keyless entry and start
USB A socket (charge only) on		

TECHNICAL

Performance	
0-100 kmh (62 mph)	10.6 s
Top speed	117 mph
Fuel Consumption Ice	
MPG (combined)	54.1 mpg
L/100km (combined)	5.2 l/100km
Capacities	
Boot (seats up)	720 litres
Boot (seats down)	1630 litres
Fuel tank	53 litres
General	
NCAP Overall	4

....MORE.... For the full details please call us or scan the QR code above

01446 733248

sales@pwmillar.co.uk

P W Millar 148 Port Road East Barry South Glamorgan CF62 9PZ

Whilst every effort has been made to ensure the accuracy of the vehicle specification, some inaccuracies may occasionally occur. It is important that you do not rely solely on this information, but check with a member of the sales staff about any features which may affect your decision to buy the car.