

# PW MILLAR LTD

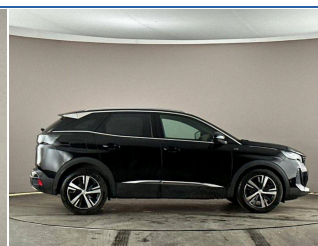
ESTABLISHED 1970

2022-72 | PEUGEOT 3008

1.5 BlueHDi GT SUV 5dr Diesel EAT Euro 6 (s/s) (130 ps) | Petrol | Manual | Nera Black



<https://www.pwmillar.co.uk>  
01446 733248



## £14,999

From **£383** per month HP

Mileage	50,425 miles
Fuel	Petrol
Engine	1.2 litre
Transmission	Manual
Gears	6
Insurance group	17E

### SPECIFICATIONS

Front and rear curtain airbags	Smartphone charging plate	Radiator grille in chrome edge trim with chequered design and black 'PEUGEOT' lettering
Front seat back map pockets	Safety pack - 3008	Dynamic stability control and electronic anti-skid system
Brumeo fabric Dashboard, front and rear door panel finish	Central locking button on dash	DAB Digital radio
18" Detroit two tone diamond cut alloy wheels	Tyre pressure sensor	PEUGEOT i-Cockpit with configurable 12.3" Head-up digital instrument panel
Chrome rear bumper fascia	Rear armrest with ski flap and two cup holders	Safety Plus Pack - 3008
Locking wheel bolts	Steering wheel mounted controls	Space saver spare wheel
Driver and front passenger side airbags	'Lights On' Reminder warning buzzer	Rear LED Peugeot signature 'Claw Effect' lights
Mistral full grain perforated leather steering wheel with aikinite stitch detail and satin chrome 'GT Line' emblem	Visibility pack - 3008	Anti theft alarm
6 speakers radio with mp3 compatible	Front ventilated disc brakes and rear disc brakes	PEUGEOT i-Cockpit with 8.0" capacitive touchscreen in centre console
2 X Rear number plate lights	Aikinite stitching in armrest, gear lever and dashboard fascia	Driver sport pack - 3008
Remote control central locking		

### TECHNICAL

<b>Performance</b>	
0-100 kmh (62 mph)	<b>10.6 s</b>
Top speed	<b>118 mph</b>
<b>Emissions Ice</b>	
CO <sub>2</sub> (g/km)	<b>114 (g/km)</b>
<b>Fuel Consumption Ice</b>	
MPG (combined)	<b>47.2 mpg</b>
L/100km (combined)	<b>6 l/100km</b>
MPG (combined)	<b>53.3 mpg</b>
MPG (extra urban)	<b>58.9 mpg</b>
MPG (urban)	<b>46.3 mpg</b>
<b>Capacities</b>	
Boot (seats up)	<b>520 litres</b>
Boot (seats down)	<b>1482 litres</b>
Fuel tank	<b>53 litres</b>

....MORE.... For the full details please call us or scan the QR code above

01446 733248

[sales@pwmillar.co.uk](mailto:sales@pwmillar.co.uk)

P W Millar 148 Port Road East Barry South Glamorgan CF62 9PZ

Whilst every effort has been made to ensure the accuracy of the vehicle specification, some inaccuracies may occasionally occur. It is important that you do not rely solely on this information, but check with a member of the sales staff about any features which may affect your decision to buy the car.